



NATIONAL
WILDLIFE
REFUGE SYSTEM

Module 3c

Station Set-up



NATIONAL
WILDLIFE
REFUGE SYSTEM

The purpose of this section is to familiarize you with your refuge.

- Identify the refuge's closure, what activities are permitted and prohibited, and why.
- Show the refuge's layout- where stewards will be located.

This is an example presentation and should be updated with your station's specific information.

Purpose of the Steward Program

Provide information to the public

- To understand the importance of protecting shorebirds and their habitats

Answer questions

- About the refuge, beach, closure, birds, and their habitats

Educate People

- About the management authority, agency mission, public uses



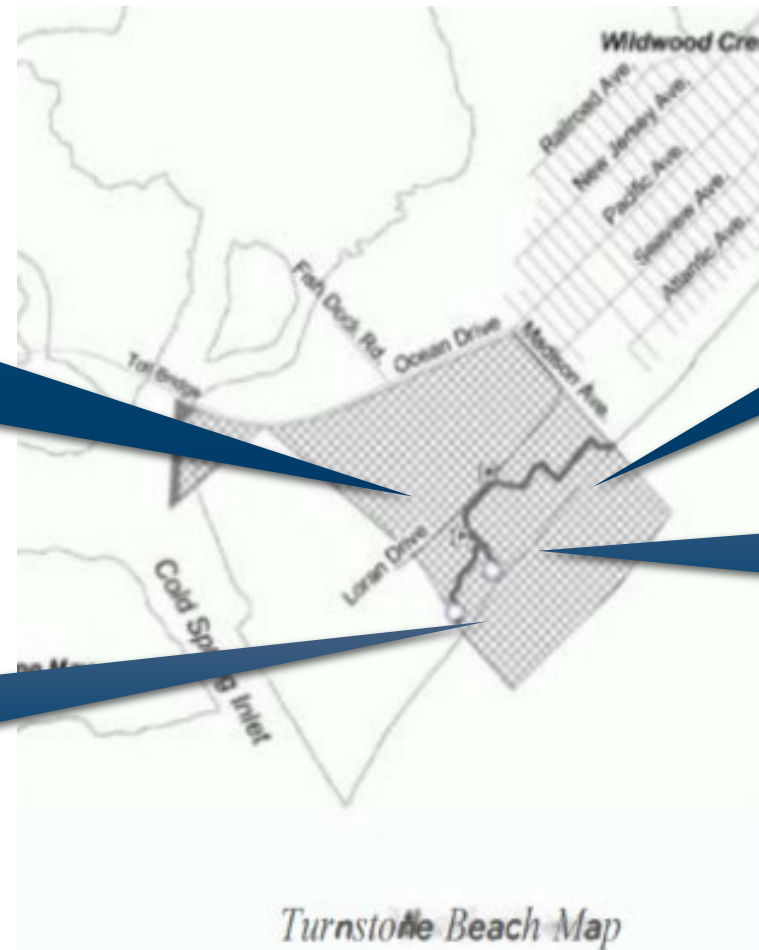
Turnstone Beach's Closure, April 1–September 30

The refuge's mission is "Wildlife First"

Provides an undisturbed area for birds to rest, nest, and feed.

Permitted: using trails and observation decks to view the beach

Prohibited: vehicles, pets, drones, kites, walking, swimming, sunbathing, surfing

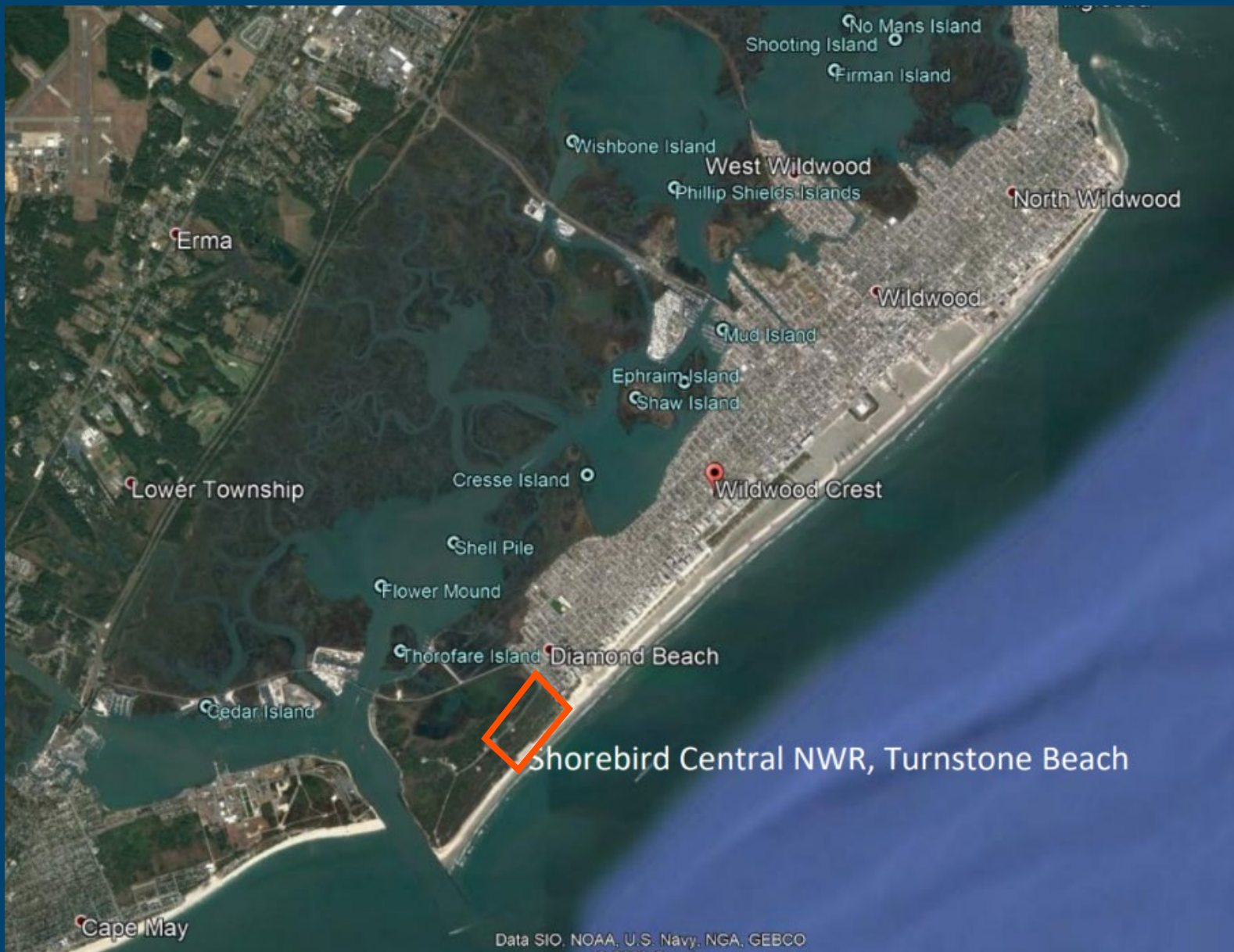


Professionalism

- It is vitally important to act in a professional, objective, tactful, and courteous manner while on duty.
- The public will view you as representing the U.S. Fish and Wildlife Service.
- How you look and what you say will reflect on the refuge and on the U.S. Fish and Wildlife Service.



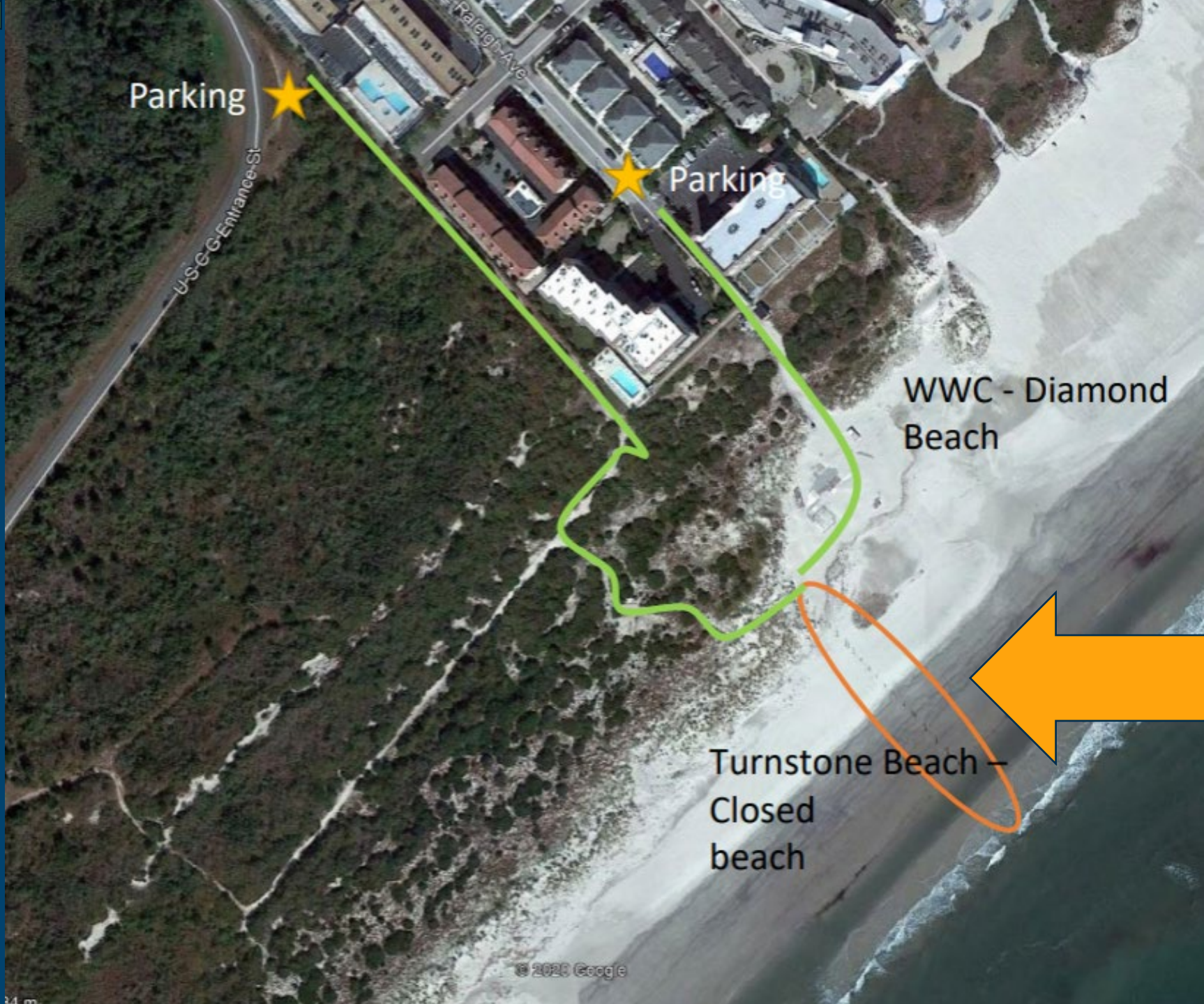
PHOTO: USFWS
CAPE MAY NATIONAL WILDLIFE REFUGE, NJ



Turnstone Beach Location Map, New Jersey



Turnstone Beach Map, New Jersey



Parking



Parking



WWC - Diamond Beach

Turnstone Beach -
Closed beach

This is the north boundary where Stewards will be stationed every day. Pilings, ropes, and signs clearly mark the boundary.



Beach closures and Stewards make a HUGE impact for the birds!

Thank you!

PHOTO: *USFWS/ Heidi Hanlon*
CAPE MAY NATIONAL WILDLIFE REFUGE, NJ

